

NANOTECHNOLOGY



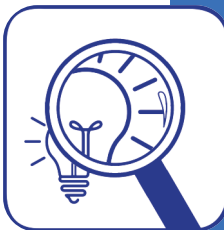
ADVANCED  
MICROSCOPY



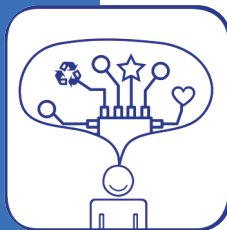
SCIENTIFIC  
INSTRUMENTS



ENVIRONMENTAL  
SENSING



RESEARCH  
SOLUTION



CUSTOM  
DEVICES

# *ElbaTech*

ELECTRONICS IN EVOLUTION

ELBATECH SRL VIA ROMA, 10 - 57030 MARCIANA (LI)  
WWW.ELBATECH.COM • INFO@ELBATECH.COM



## A tiny instrument able to carry out brilliantly challenging tasks

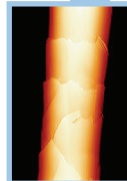
QCMagic: dual-channels, WiFi enabled.  
Quartz Crystal Microbalance embeds superior  
precision and stability in just 10x7x4cm, allowing  
you to measure frequency, mass and viscosity  
variations remotely then share acquired data directly  
to your clients' devices.



For experiments in liquid, just add our top quality  
static and flow-through measuring chambers.

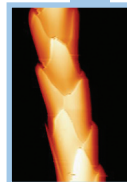


More than 20 years  
experience in SPM technology  
means reliability and an  
outstanding service.



Cashmere  
fiber

## AFM Microscopy



Cat hair



Wool fiber

We design from scratch  
Atomic Force and Scanning  
Tunneling controllers as well  
as related equipments and  
add-ons.



Custom vacuum chamber  
for semiconductor measurements  
in a controlled atmosphere

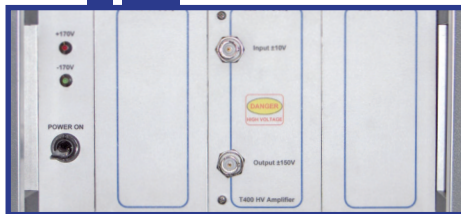
Hi, we are ElbaTech.

Since 1999 we design your Scientific Instruments on one of the most stunning Italian locations: Elba Island, where Nature helps minds to find the right inspiration. Here, innovative electronics combined with biophysics expertises provide professional solutions and reliable devices.

Elbatech staff members hold a Research background.  
That's why your next concept will convert seamlessly into a concrete project:  
because we are on the same wavelength.



## High Voltage Amplifiers and Power Supplies



Demanding high-voltage piezo movers, transducers and sensors can now exploit our extremely low-noise, wide bandwidth, High Voltage power amplifiers.



Combining a spectrum of available output voltage and current ranges with sophisticated electronics, we can tailor our HV amplifiers and power supplies exactly to your projects.



is our brand dealing with Nature, providing the highest standards in environmental science.

We design and realize IoT-based sensor networks to monitor air, land and water in the most comprehensive way: camera systems for wildlife, sensors for temperature, salinity, humidity, pressure, pollution and the many other quantities you might need to detect.



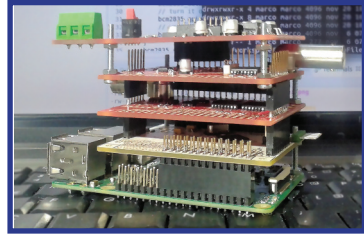
## Go clever, go IoT.

EpsilonPi is our advanced platform born to be the core of Scientific Instruments

**Powerful**, due to a fast Ethernet interface and dedicated software libraries

**Reliable**, due to the union between RaspberryPi® and a (dsPic®) DSP-based controller with real-time performances

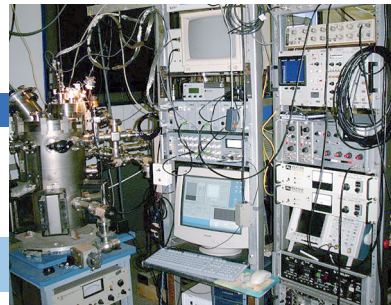
**Flexible**, thanks to task-specific companion cards



Elbatech members are *research specialists*.

They design and create novel scientific instruments and integrate their systems with third parties ones.

Elbatech Controller STM  
(Scanning Tunneling Microscope) integrated in a  
SEM (Scanning Electron Microscope)



*Consiglio Nazionale  
delle Ricerche*



ENEA

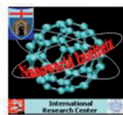


UNIVERSITY OF  
CAMBRIDGE



Materials Science & Technology

HASKÓLI ISLANDS



EUROPEAN COMMISSION  
Joint Research Centre



MAX PLANCK GESELLSCHAFT



DEPARTMENT OF  
ELECTRICAL &  
COMPUTER ENGINEERING



Bureau International  
des Poids et Mesures



SCUOLA NORMALE SUPERIORE

Osservatorio Astrofisico  
di Arcetri

Lat.: 43° 45' 14" N Long.: 11° 15' 19" E